



Clipstone Crescent  
Leighton Buzzard, Bedfordshire, LU7 3LU

£1,395 PCM



  
**WATSONS**  
LETTING SINCE 1961



## Clipstone Crescent

Leighton Buzzard, Bedfordshire, LU7  
3LU

Watsons are delighted to offer for let this three bedroom semi-detached house on the popular Brookland development within close proximity to local Schools. The accommodation comprises: Entrance hallway, lounge/diner, kitchen with oven and hob units, stairs to first floor, three bedrooms, family bathroom with shower above the bath, garage and rear garden. The property is offered Unfurnished and is available mid to end of February.  
\*\*\*FILE PHOTOS USED FOR MARKETING\*\*\*

### Entrance Hallway:

**Lounge/ Diner:**  
10'10 x 21'5 (3.30m x 6.53m)

**Kitchen:**  
8'7 x 8'2 (2.62m x 2.49m)

### Stairs to First Floor:

**Bedroom:**  
11'8 x 9'8 (3.56m x 2.95m)

**Bedroom:**  
10'6 x 9'5 (3.20m x 2.87m)

**Bedroom:**  
7'7 x 6'9 (2.31m x 2.06m)

### Bathroom:

### Rear Garden:

### Garage:

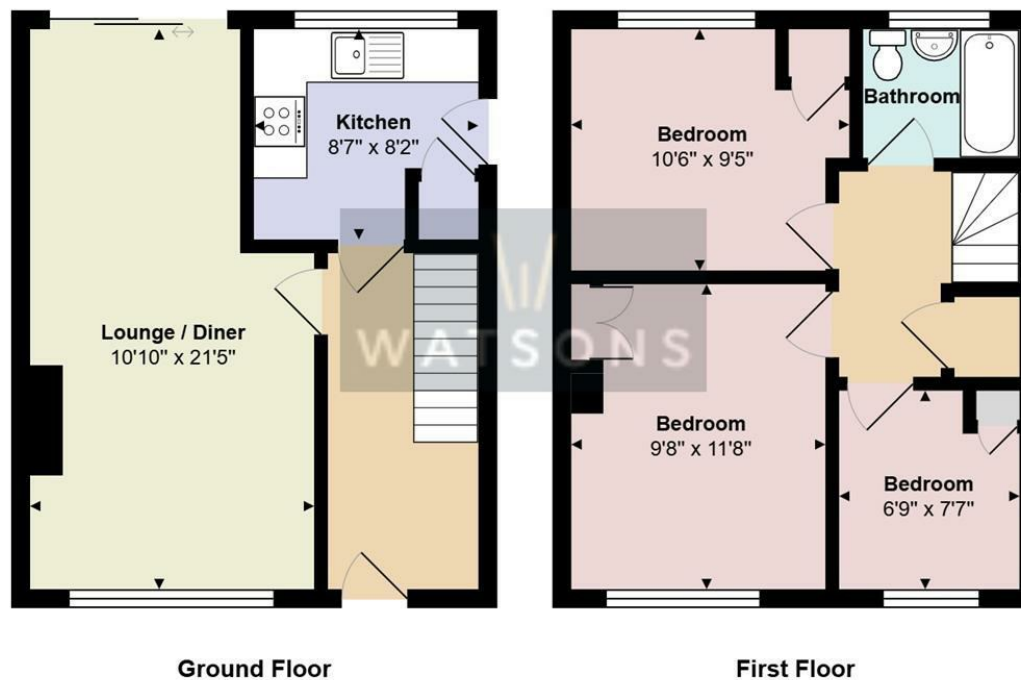






Measurements and floor plans are approximate and for guidance only. Any prospective Tenant should check all measurements. Floor plan coverings and fitments are for example only and may not represent the true finish of the property.

## Floor Plan



## Viewing

Please contact our Watsons Lettings Office on 01525 378309 if you wish to arrange a viewing appointment for this property or require further information.

17 - 21 Ropa Court, Leighton Buzzard, Bedfordshire, LU7 1DU  
Tel: 01525 378309 Email: [info@watsonslb.co.uk](mailto:info@watsonslb.co.uk) [www.watsonslb.co.uk](http://www.watsonslb.co.uk)